

JAGTECH

Preferred Technology Partner

AutoMAPS Introduction

Askeladden

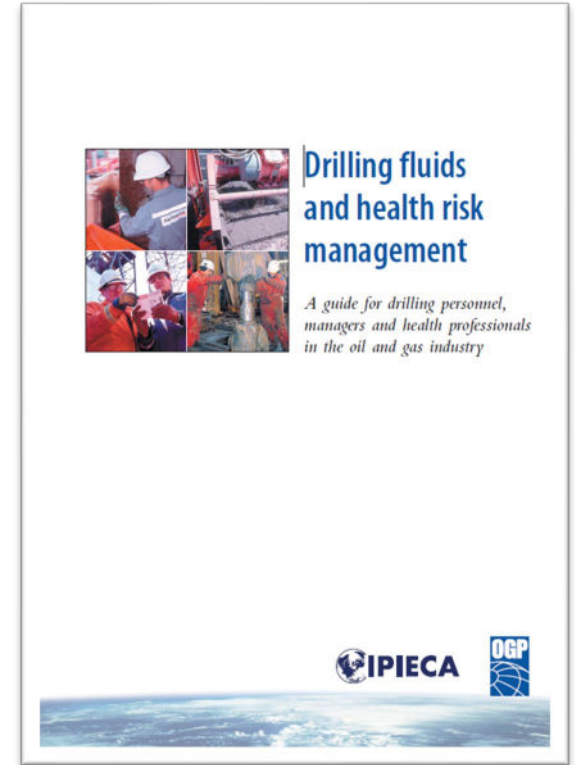
PATENTED

JAGTECH



Ditch Magnet Challenges Today

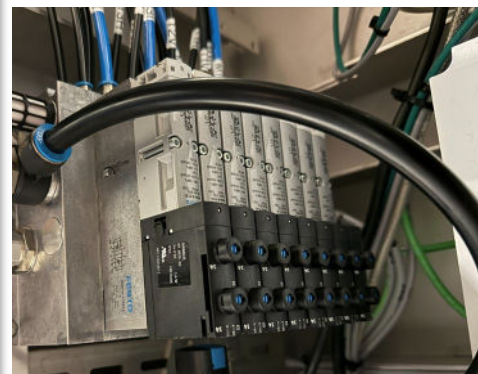
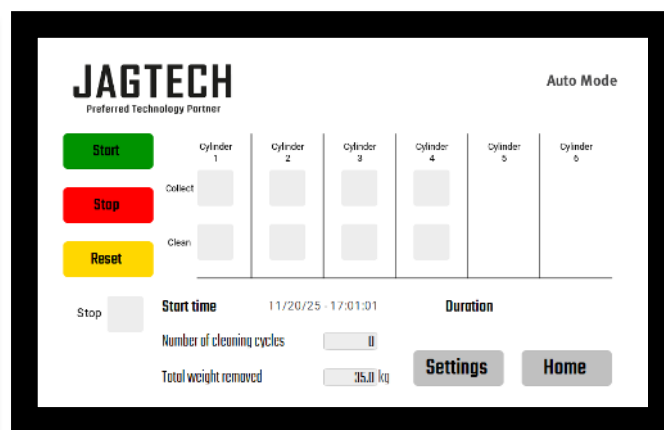
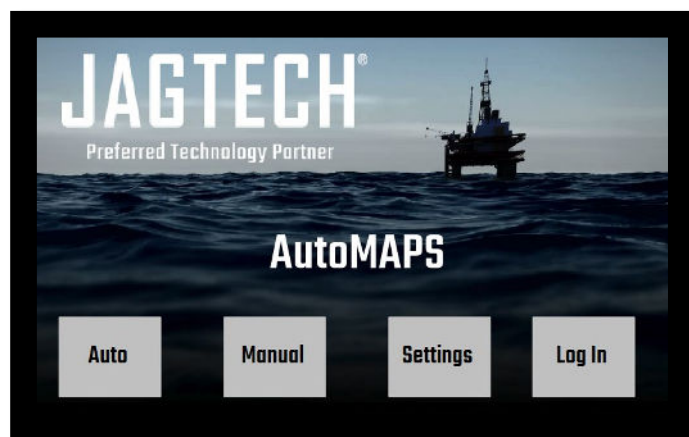
- Manual work
- Time consuming
- Heavy lifting
- HSE hazards
 - ✓ Exposed to fumes from the mud
 - ✓ Exposed to chemicals
 - ✓ Noise
 - ✓ Skin cut on sharp swarf
 - ✓ Accessibility
 - ✓ Magnetic field
 - ✓ Pinches and crushing



AutoMAPS Solution

PATENTED

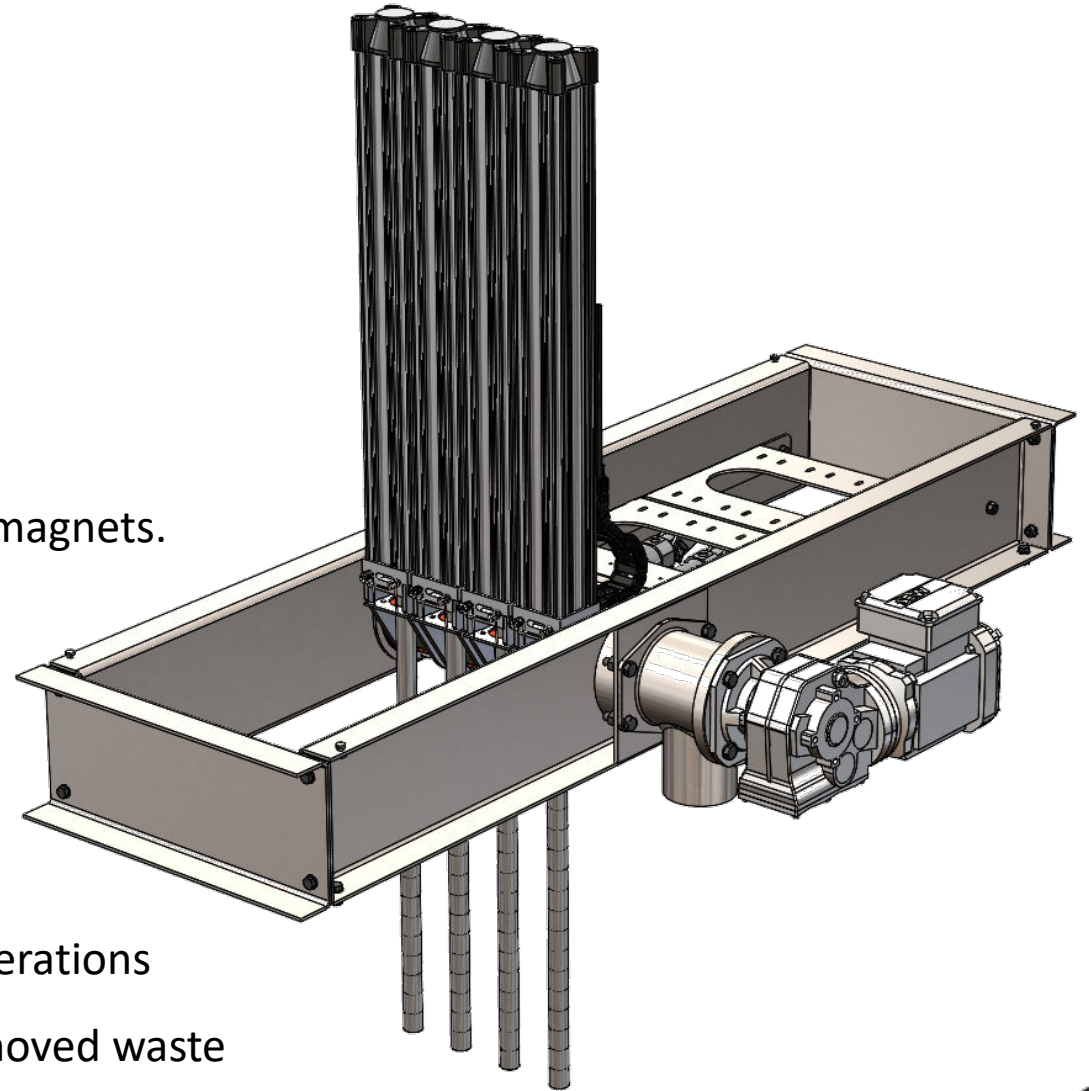
- Fully automatic dich magnet system
- Pre-Engineered, Custom Built to flowline, Inline or application specific
- Pneumatic operated
- Integrated to rig process system
- WiFi remote operated – intuitive local screen setup
- Automatic logging of removed weight (option)
- Flexible installation



JAGTECH

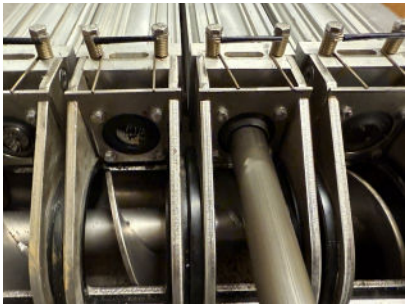
Jagtech® AutoMAPS

- Fully automatic system
- ATEX Zone 1, category IIB, Temperature class T3
- IP 65
- No need for personnel during operation
- Easy installation. Built to flowline width up to typically 7 magnets.
- Retrofit to existing launder system.
- Adaptive and scalable for various installations.
- Pneumatic operated.
- Adjustable cycle time.
- Adjustable and pre-set cleaning cycle time for various operations
- Self adjusting cleaning cycle time based on weight of removed waste
- Adaptive to rig control system via Wifi or bus communication
- Fully retractable from flowline
- Titanium high effective magnetic rods (peak strength of 1.2 T)



JAGTECH

Features



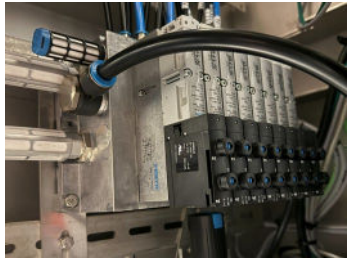
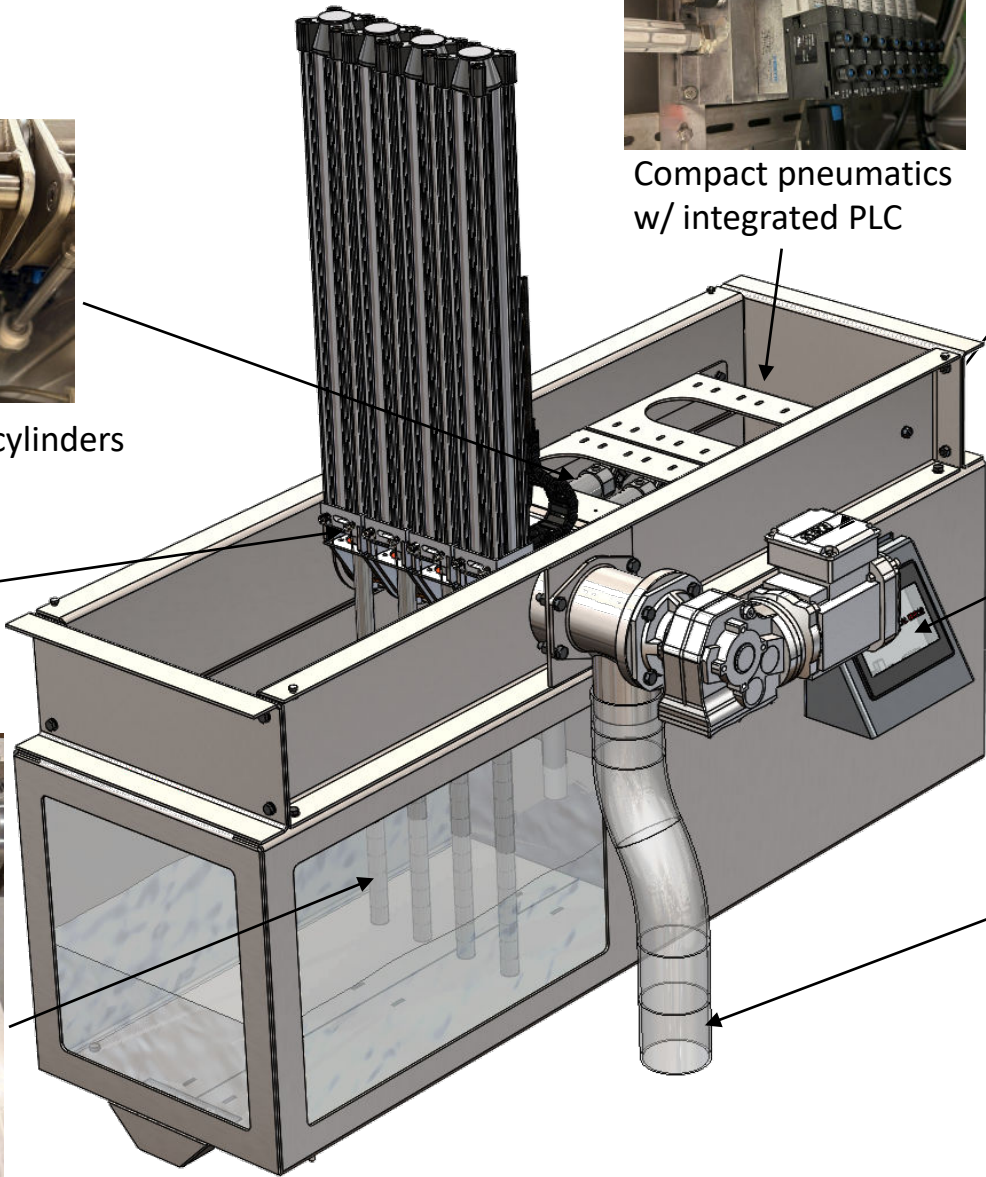
Dual scraper assembly



Heavy duty stainless cylinders



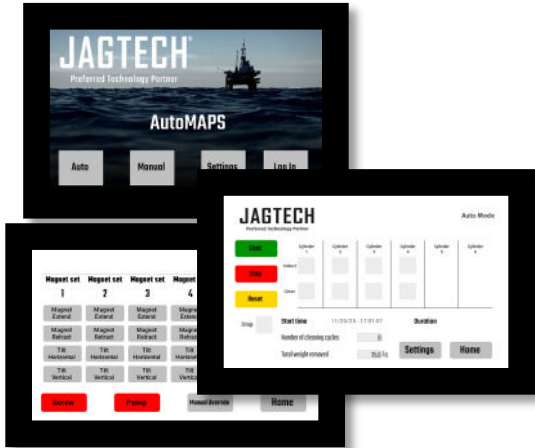
Highly efficient titanium magnet rods



Compact pneumatics
w/ integrated PLC



Electric or air operated screw



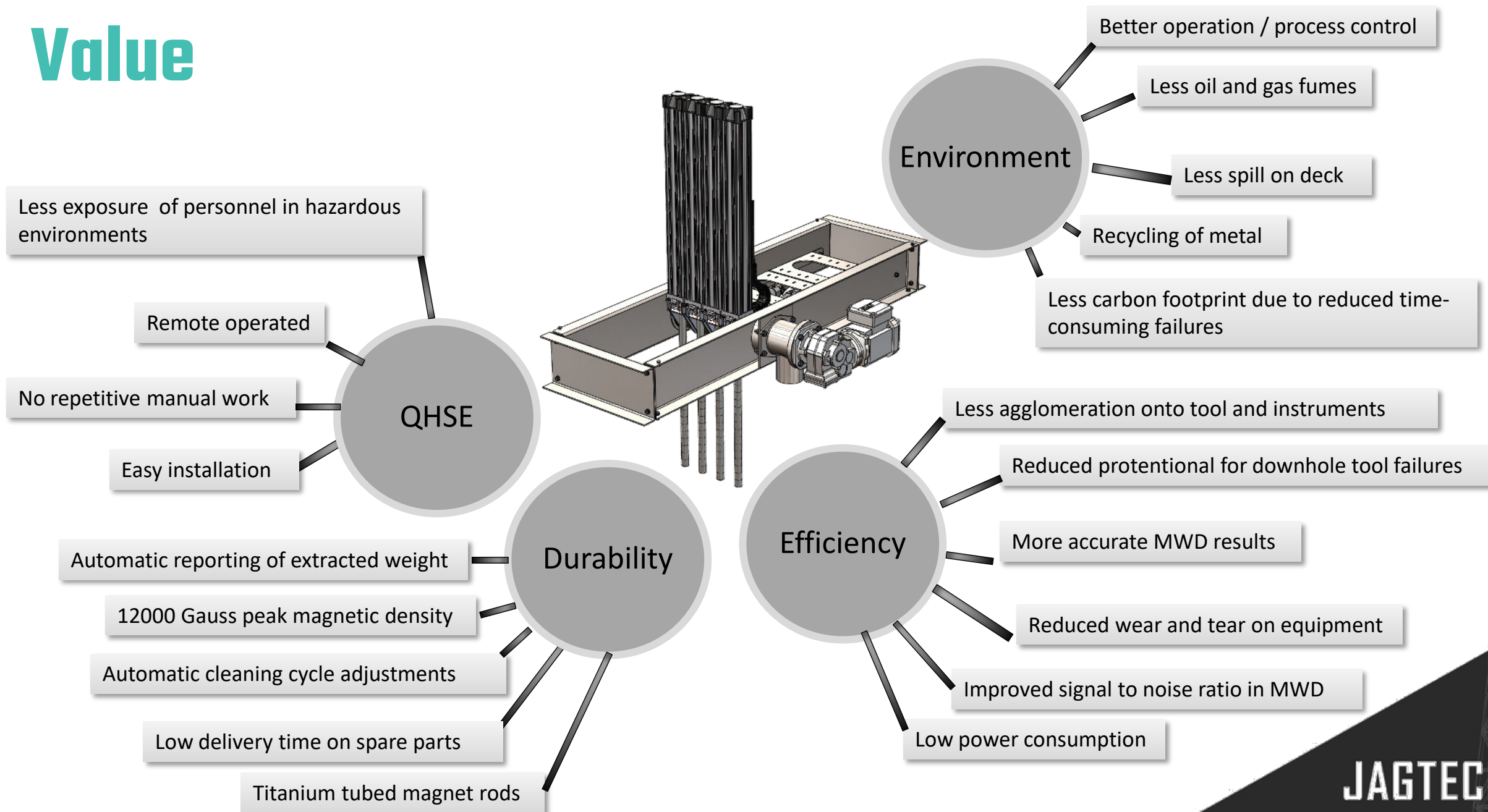
Simple and intuitive user interface



Automatic weighing of waste

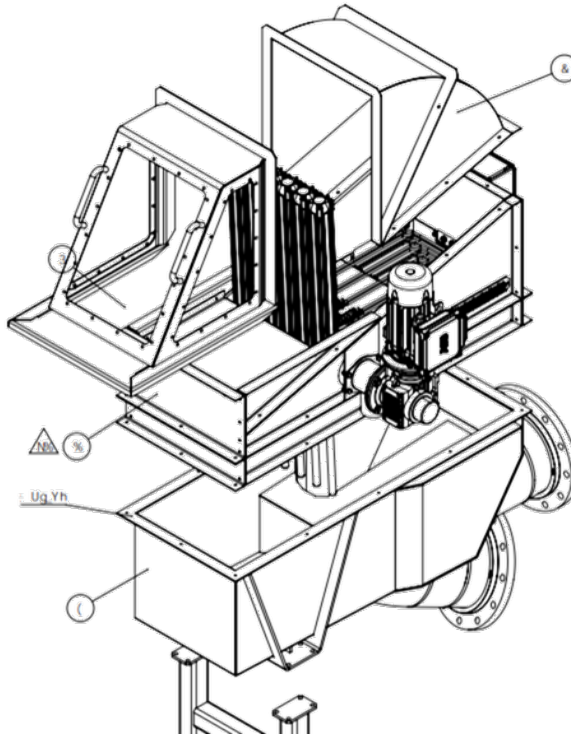
JAGTECH

Value

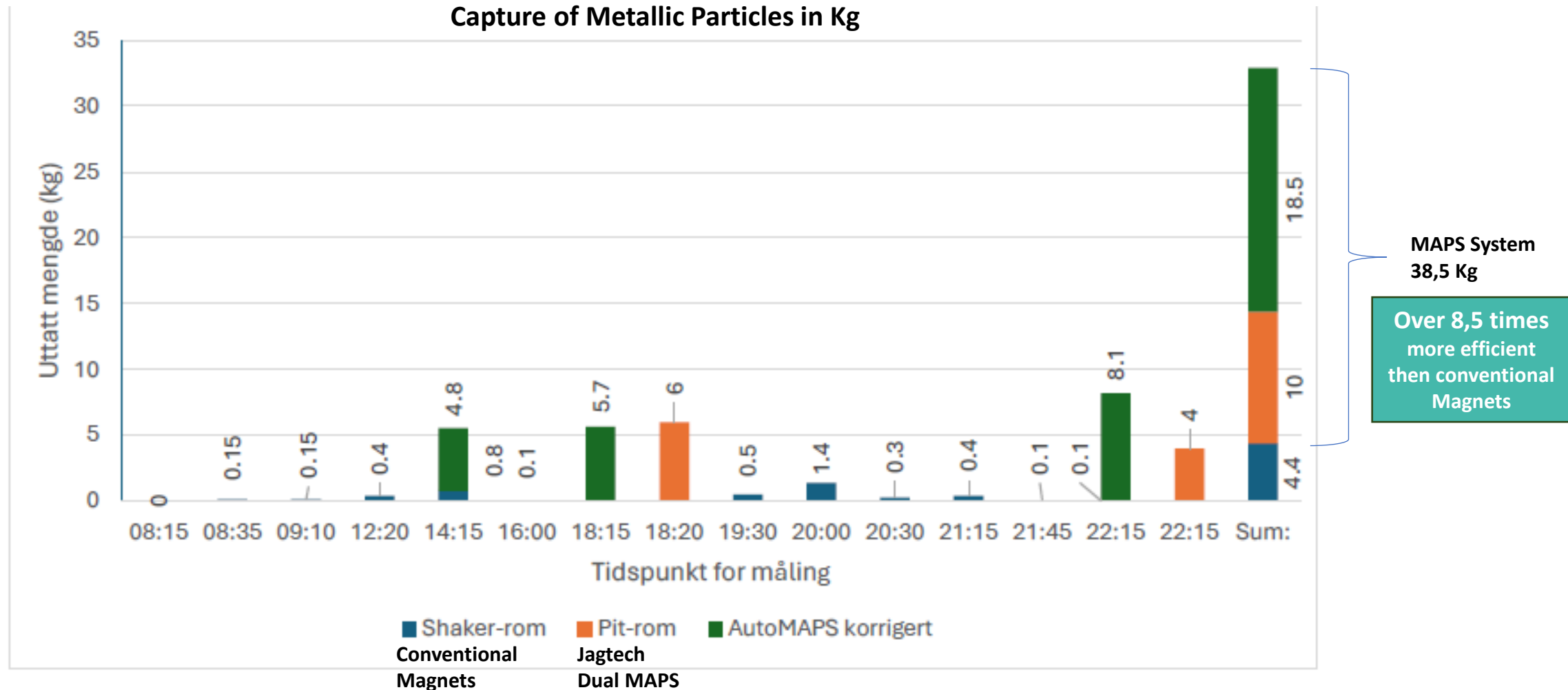


Jagtech AutoMAPS @ STB

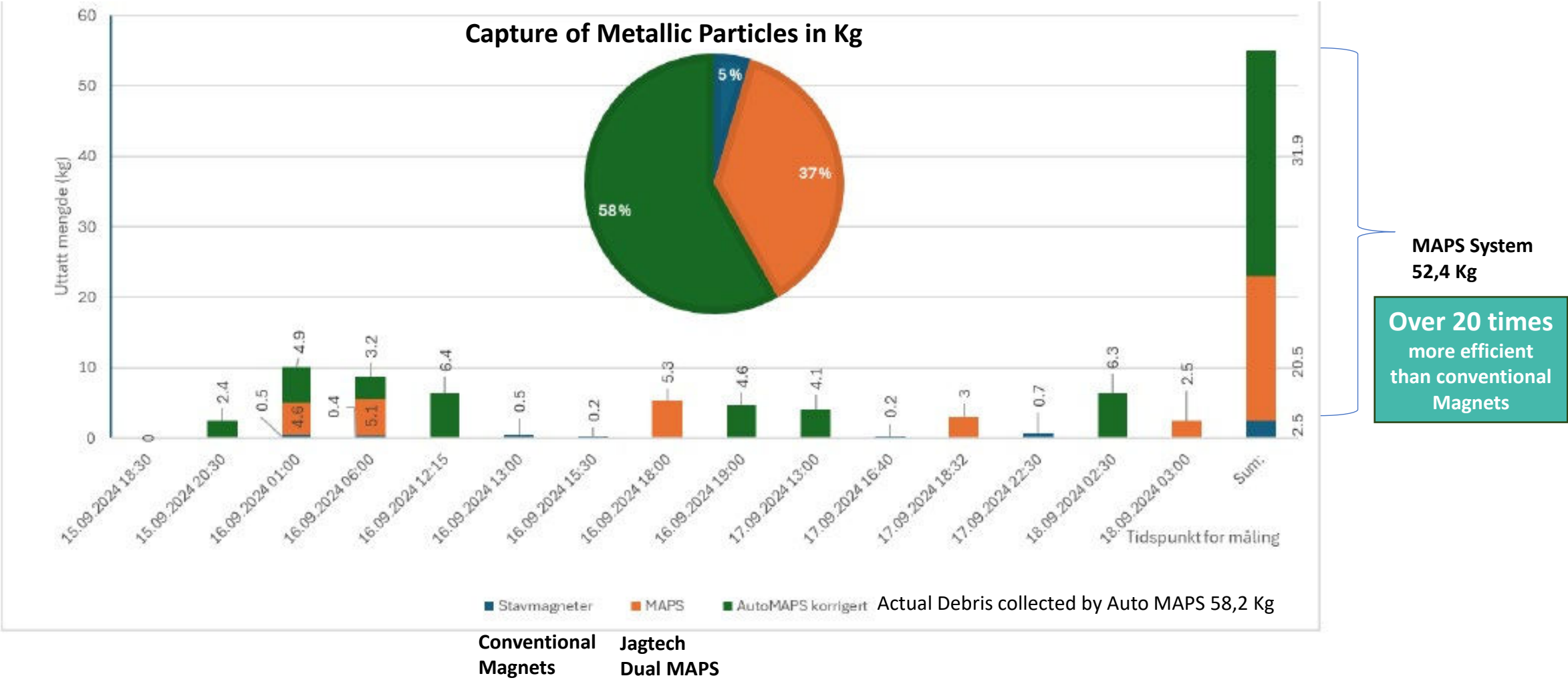
- Pilot Project. Equinor, Archer and Jagtech
- Installed since 2024
- To be adapted as permanent installation
- Installed in flowline between shaker and pit room
- Technology approved by Equinor
- High efficiency
- Low NPT
- Process bypass opportunity
- Easy maintenance
- Adapted by Statfjord B in 2025
- Project has been a real success!



Case Study AutoMAPS – Field Test Statfjord B

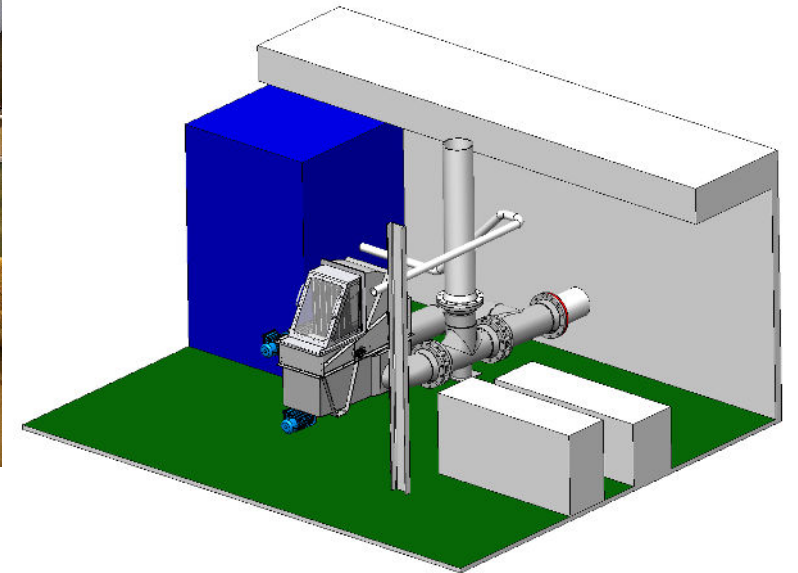
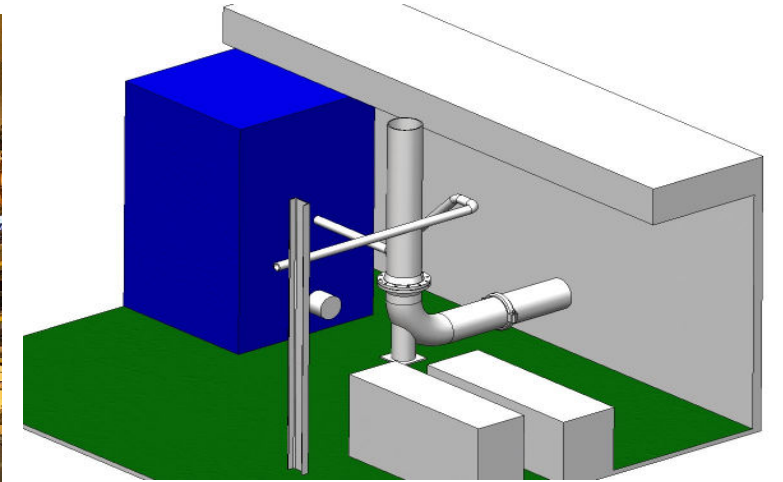


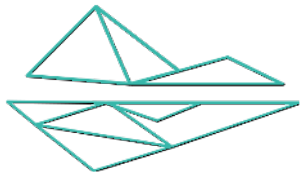
Case AutoMAPS – Field Test Statfjord B



Field study - Jagtech AutoMAPS @ GFC Inline Example

- Installation in pipeline behind shakers
- Minor reconstruction of existing pipe system for implementation
- Low energy consumption
- WiFi communication with operator is requested
- Implemented weighing of the extracted material is requested
- Process by-pass opportunity
- Air driven extraction screw





- **Next Step?**

- Survey to determine installation site
- Preliminary system engineering
- Survey report with assembly proposal
- Definition of scope of work
- Offer / Proposal

